



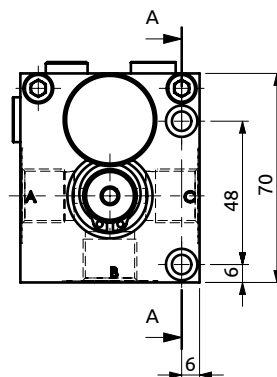
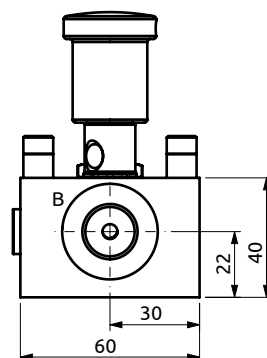
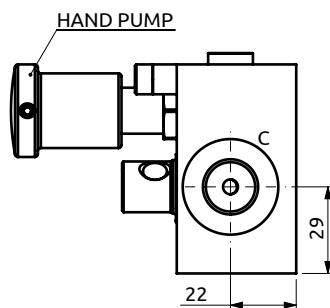
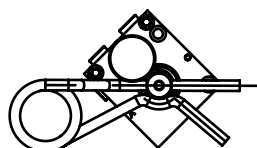
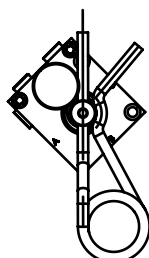
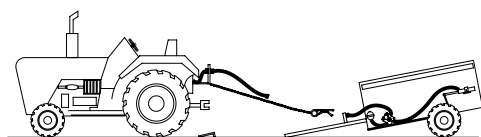
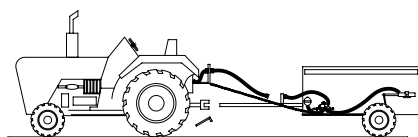
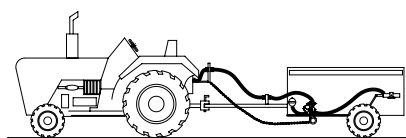
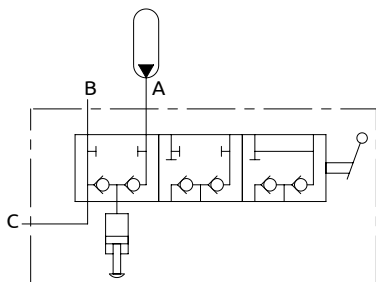
Valvola d'emergenza per freno rimorchio Emergency trailer brake valve

DRIVE CONDITIONS: (The split pin is not included)

The accumulator recharge while the trailer brakes are actuated.

Emergency brake released
(The shaft and the pin have to be turned anti clock wise against the lock)
B connected to C

Emergency brake engaged
B connected to A



CAUTION !

When the trailer is coupled to the tractor, with the engine running, it's necessary to actuate the tractor brake at least 5 seconds to enable the complete recharge of the trailer emergency accumulator. This is an emergency brake valve not a park brake device.

DESCRIZIONE

Questa valvola frena il rimorchio quando accidentalmente si disaccoppia dal trattore. A causa della perdita tra il corpo e il blocco valvola dopo qualche ora l'accumulatore pressurizza la linea C. La pompa manuale viene utilizzata per scaricare questa pressione.

DESCRIPTION

This valve brakes the trailer when it is accidentally decoupled from the tractor. Because of the leakage between the body and the valve spool after some hours the accumulator A pressurizes the C line. The hand-Pump is used to discharge this pressure.

Corpo in acciaio / Steel body

Ordine	Descrizione	Dimensione	Peso
Ordering Code	Working Pressure	Port Size	Weight
A903710.01.00	250 bar	M18x1.5	1.36 kg