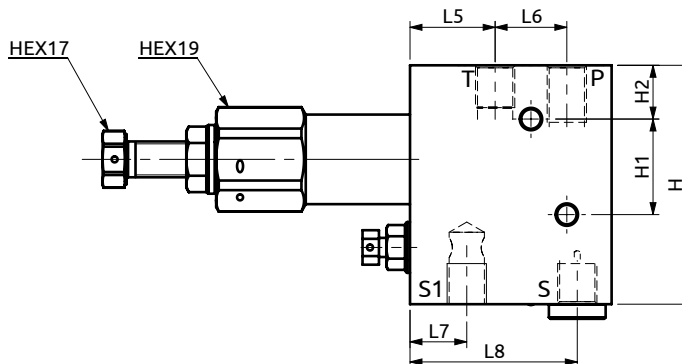
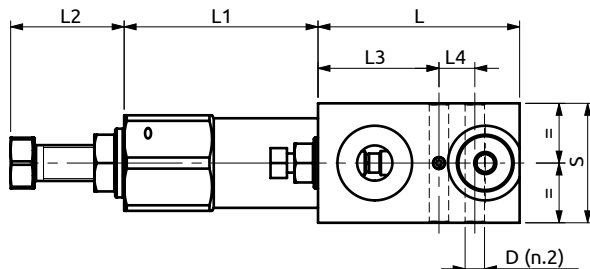
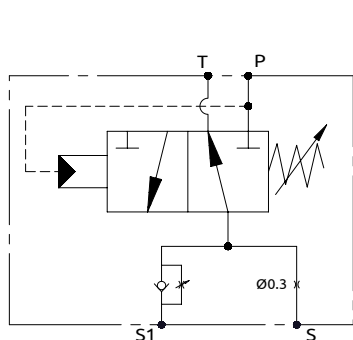




Valvola di sequenza per limitatori di carico
Sequence valve for load limiting system



Corpo in alluminio / Aluminium body

67.5	69	~38	40.5	12	28.5	24	19	56	40	80	32	18	Ø6.5
L	L1	L2	L3	L4	L5	L6	L7	L8	S	H	H1	H2	D



DESCRIZIONE	DESCRIPTION
Valvola di sequenza per limitatore di carico. Caratterizzata da trafilemento trascurabile e isteresi molto limitata.	Sequence valve for load control systems. Negligible leakage and very low hysteresis.

Codice Ordinazione	Campo di Taratura	Taratura Standard	Incremento per giro	Portata Massima	Pressione Max	Dimensione Porte	Peso
Ordering Code	Pressure Range	Standard Setting	Pressure Increase	Max Flow	Max Pressure	Port Size	Weight
A600011.11.00	80-300 bar	280 bar	25 bar/turn	8 l/min	350 bar	1/4"G	0.95 kg