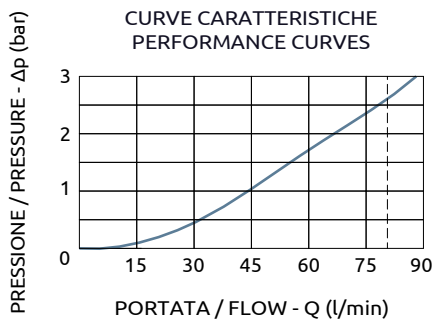
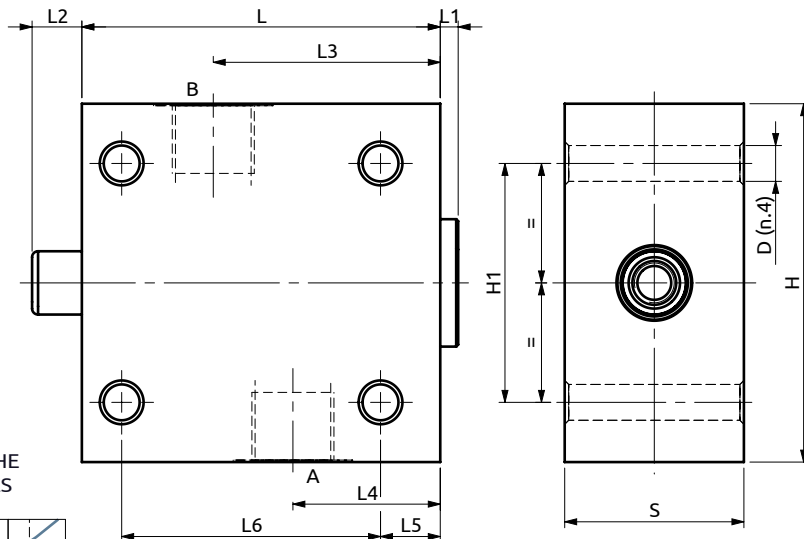
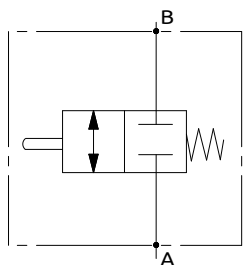




Valvola di fine corsa End stroke valve



Corpo in acciaio / Steel body

90	5	12.5	57	37	15	65	45	90	60	Ø9
L	L1	L2	L3	L4	L5	L6	S	H	H1	D



DESCRIZIONE

La valvola blocca normalmente il flusso nelle due direzioni e permette il flusso libero bidirezionale in posizione "premuta".

DESCRIPTION

The valve normally locks the oil flow in both directions. Free bidirectional flow in switched position.

Codice Ordinazione	Portata Massima	Pressione Max	Dimensione Porte	Corsa Massima	Peso
Ordering Code	Max Flow	Max Pressure	Port Size	Max Stroke	Weight
A200401.07.00	80 l/min	400 bar	1/2"G	12.5 mm	0.4 kg