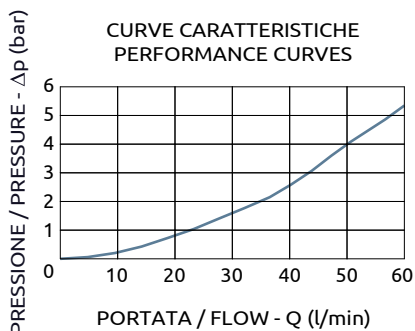
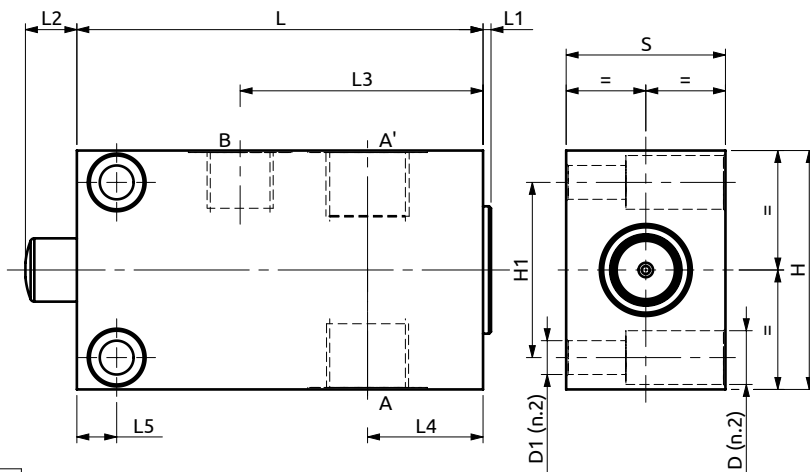
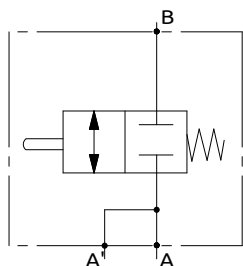




Valvola di fine corsa End stroke valve



Corpo in acciaio / Steel body

102	2	13	61	29	10	40	60	44	Ø13.5	Ø8.5
L	L1	L2	L3	L4	L5	S	H	H1	D	D1



DESCRIZIONE

La valvola blocca normalmente il flusso nelle due direzioni e permette il flusso libero bidirezionale in posizione "premuta".

DESCRIPTION

The valve normally locks the oil flow in both directions. Free bidirectional flow in switched position.

Codice Ordinazione	Portata Massima	Pressione Max	Corsa Massima	Dimensione Porte		Peso
Ordering Code	Max Flow	Max Pressure	Max Stroke	Port Size		Weight
A200301.01.00	60 l/min	400 bar	13 mm	A, A'	1/2"G	1.6 kg
				B	3/8"G	