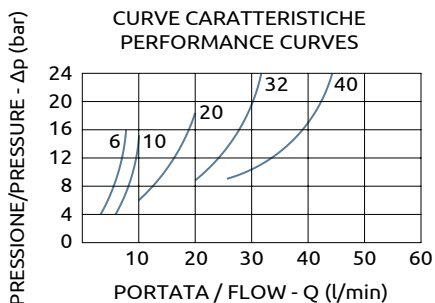
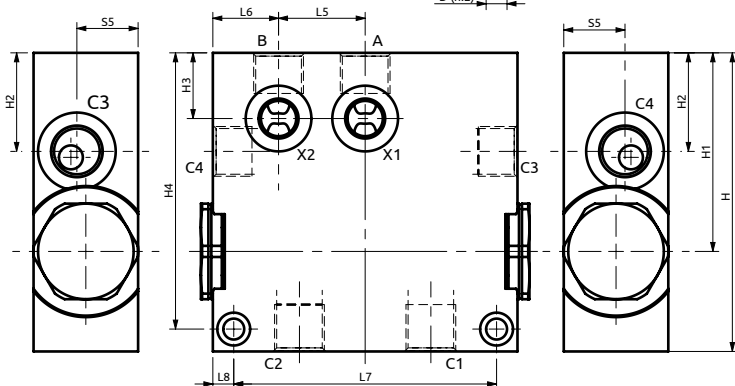
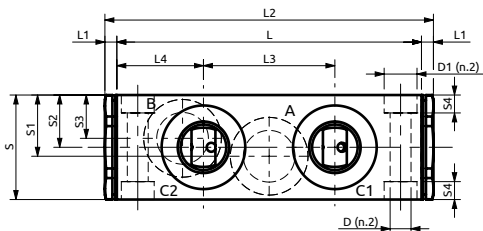
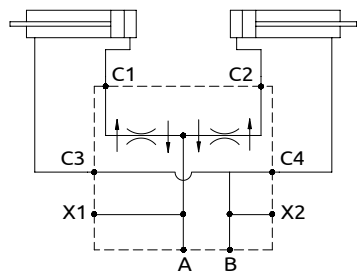




Divisori e riunificatori di flusso
Flow dividers/combiner



Corpo in acciaio / Steel body

102	4	110	44	29	29	22	88	7	35	20.5	17.5	14.5	6	20.5	100	66.5	33	22	92.5	Ø7	Ø11
L	L1	L2	L3	L4	L5	L6	L7	L8	S	S1	S2	S3	S4	S5	H	H1	H2	H3	H4	D	D1



DESCRIZIONE	DESCRIPTION
Le valvole permettono di dividere il flusso d'olio in ingresso in due portate uguali, indipendentemente dalle pressioni di lavoro sui due rami. Nel verso opposto mantengono uguali le portate riunificate.	These valves split the inlet flow in two equal parts and keep equal the flows in the reverse direction, regardless of the working pressure on both lines.

Codice Ordinazione	Campo di Portata errore Max: $\pm 3\%$	Pressione Max	Dimensione Porte		Peso
Ordering Code	Flow Range Max error: $\pm 3\%$	Max Peak Pressure	Port Size		Weight
A140300.31.00	3-6 l/min	400 bar	A, B, C1, C2, C3, C4	3/8"G	1.25 kg
A140300.32.00	6-10 l/min	400 bar			1.25 kg
A140300.33.00	10-20 l/min	400 bar			1.25 kg
A140300.34.00	20-32 l/min	400 bar	X1, X2	1/4"G	1.25 kg
A140300.35.00	32-40 l/min	400 bar			1.25 kg