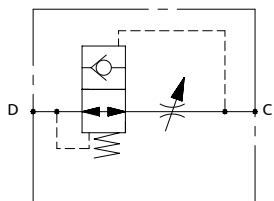
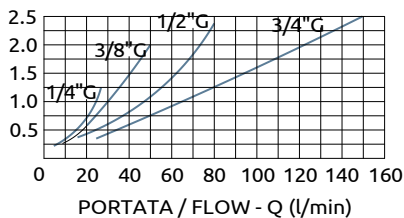




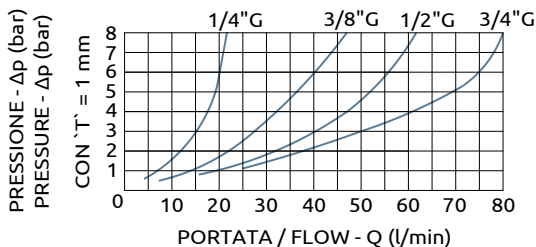
Valvole controllo portata con protezione contro la rottura di tubazioni
 Flow control valves with protection against hoses breakings



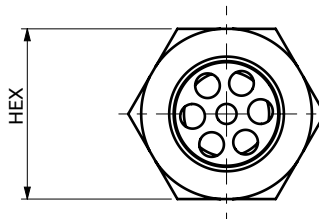
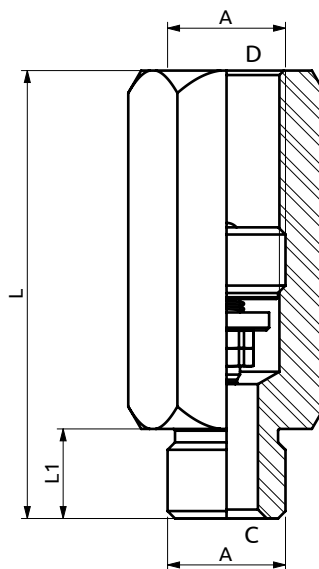
CURVE CARATTERISTICHE
 PERFORMANCE CURVES



DISTANZA DI REGOLAZIONE - T' (mm)
 REGULATION DISTANCE - T' (mm)



PRESSIONE - Δp (bar)
 PRESSURE - Δp (bar)
 CON T' = 1 mm



A090251.01.00	1/4" G	50	10	19
A090351.01.00	3/8" G	55	12	22
A090451.01.00	1/2" G	70	14	27
A090651.01.00	3/4" G	75	16	36
COD.	A	L	L1	HEX



DESCRIZIONE	DESCRIPTION
A richiesta si possono fornire con foro calibrato sul disco per il controllo della velocità di discesa.	On request, supplying with a gauged hole on the disk for the descent speed control.

Codice Ordinazione	Portata Massima	Pressione Max	Dimensione Porte	Peso
Ordering Code	Max Flow	Max Pressure	Port Size	Weight
A090251.01.00	20 l/min	350 bar	1/4" G	0.075 kg
A090351.01.00	40 l/min	350 bar	3/8" G	0.100 kg
A090451.01.00	60 l/min	350 bar	1/2" G	0.200 kg
A090651.01.00	80 l/min	350 bar	3/4" G	0.380 kg