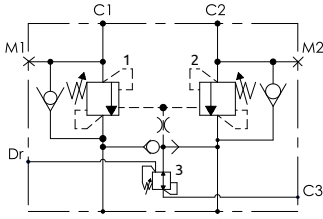


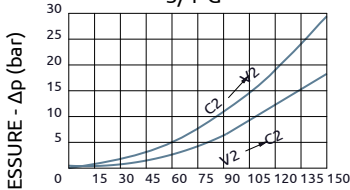


Valvola di blocco bilanciata doppia flangiabile per motori idraulici
Dual overcentre valve, flangeable for hydraulic motors



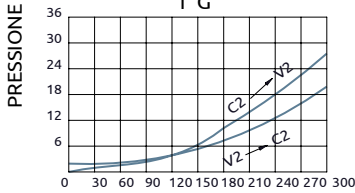
CURVE CARATTERISTICHE
PERFORMANCE CURVES

3/4" G

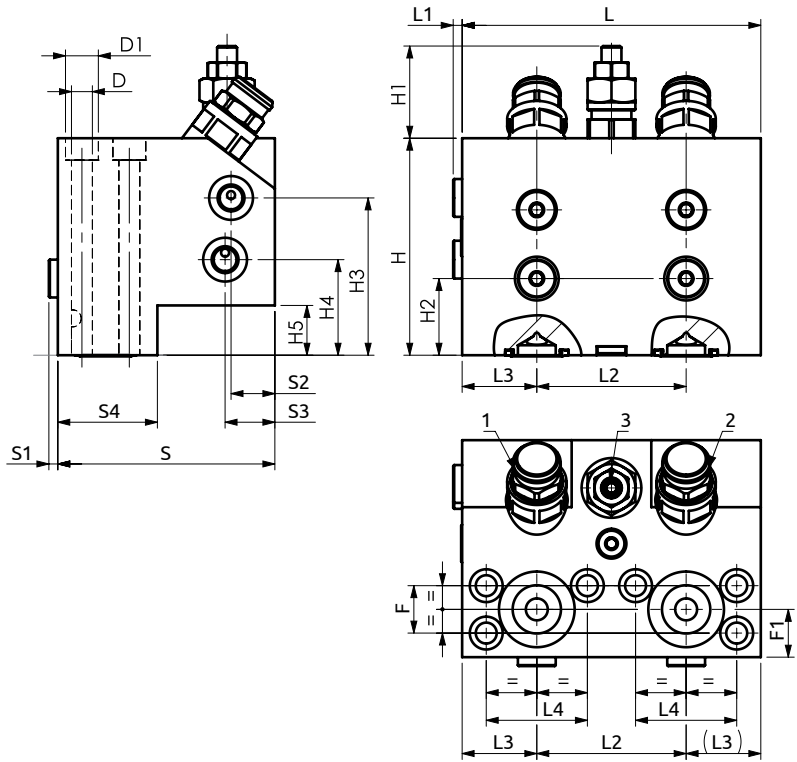


PORTATA / FLOW - Q (l/min)

1" G



PORTATA / FLOW - Q (l/min)



Corpo in acciaio / Steel body

A078281.03.00	150	4.5	75	37.5	50.8	109	4.5	22	25	50	109	~46	38.5	79	48	25	23.8	24	Ø10.5 (n.6)	Ø16.5	10.8 Kg
A078281.02.00	150	4.5	75	37.5	50.8	109	4.5	22	25	50	109	~46	38.5	79	48	25	23.8	24	Ø10.5 (n.6)	Ø18.5	10.8 Kg
A078281.07.00	165	4.5	84	40.5	57.2	140	4.5	20	20	64	139	~46	50	115.5	85	25	27.7	33	Ø10.5 (n.8)	Ø18.5	20.6 Kg
COD.	L	L1	L2	L3	L4	S	S1	S2	S3	S4	H	H1	H2	H3	H4	H5	F	F1	D	D1	Weight



DESCRIZIONE	DESCRIPTION
Valvola di blocco bilanciata doppia con flangiatura per motori idraulici SH7V e F12.	Dual flangeable overcenter valve for hydraulic motors SH7V and F12.

Codice Ordinazione	Rapporto di Pilotaggio	Campo di Taratura	Taratura Standard	Incremento per Giro	Portata Massima	Pressione Max	Dimensione Porte		
Ordering Code	Pilot Ratio	Pressure Range	Standard Setting	Pressure Increase	Max Flow	Max Pressure	Port Size		
A078281.03.00	4:1	1	100-420 bar	380 bar	82 bar/turn	150 L/min	420 bar	C1, C2	3/4"SAE6000
		2	100-420 bar	380 bar	82 bar/turn			V1, V2	3/4" G
	3	15-45 bar	30 bar	10.5 bar/turn	M1, M2, C3, Dr			1/4" G	
A078281.02.00	8:1	1	100-420 bar	380 bar	82 bar/turn	150 L/min	420 bar	C1, C2	3/4"SAE6000
		2	100-420 bar	380 bar	82 bar/turn			V1, V2	3/4" G
	3	15-45 bar	30 bar	10.5 bar/turn	M1, M2, C3, Dr			1/4" G	
A078281.07.00	6:1	1	150-420 bar	380 bar	95 bar/turn	300 L/min	420 bar	C1, C2	1"SAE6000
		2	150-420 bar	380 bar	95 bar/turn			V1, V2	1" G
	3	15-45 bar	30 bar	10.5 bar/turn	M1, M2, C3, Dr			1/4" G	