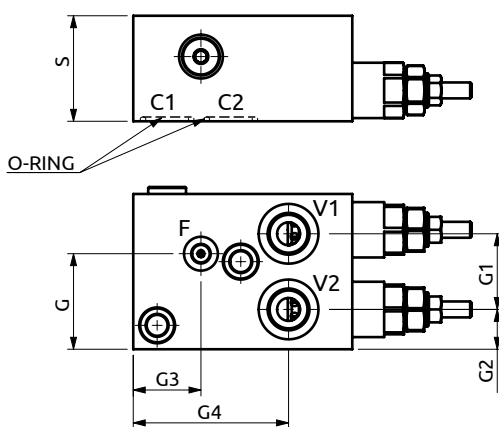
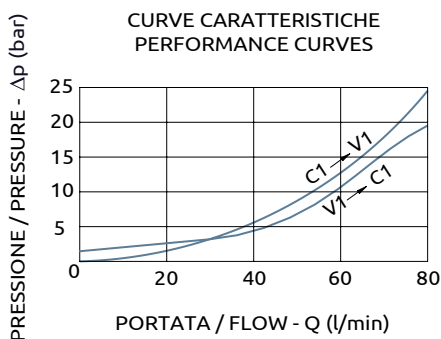
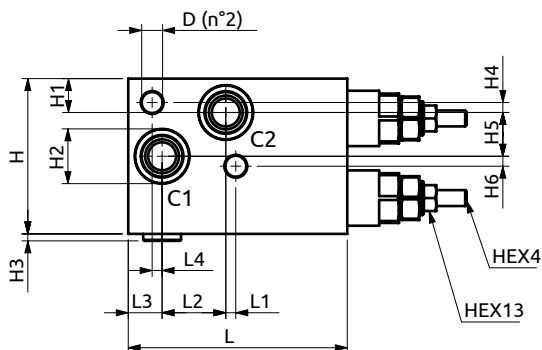
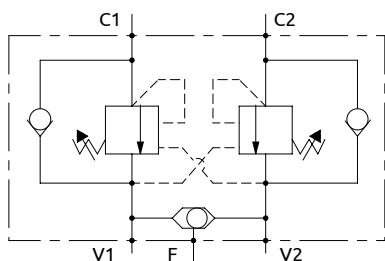




Valvola di bilanciamento doppio effetto flangiata con cartuccia serie SM
Flangeable single overcenter valve with cartridge "SM series"



Corpo in alluminio / Aluminium body

B070481.31.00	110	5	32	17	5	53	78	17	27.5	3.5	5	22	5	48	38	20	34	78	Ø10.5	OR 130	22.22x2.62
COD.	L	L1	L2	L3	L4	S	H	H1	H2	H3	H4	H5	H6	G	G1	G2	G3	G4	D		O-RING



DESCRIZIONE	DESCRIPTION
Valvola di blocco bilanciata doppia con flangiatura per motori idraulici DANFOSS OMS. Permette il flusso libero da V1 verso C1 e da V2 verso C2.	Dual flangeable overcenter valve for DANFOSS OMS machines. The valve allows: free flow from V1 to C1 and from V2 to C2.
CODICE ORDINAZIONE PIOMBATURA	SEALING ORDERING CODE
916005	

Codice Ordinazione	Rapporto di Pilotaggio	Campo di Taratura	Taratura Standard	Incremento per giro	Portata Massima	Pressione Max	Dimensione Porte		Peso
Ordering Code	Pilot Ratio	Pressure Range	Standard Setting	Pressure Increase	Max Flow	Max Pressure	Port Size		Weight
B070481.31.00	4.25:1	80-350 bar	210 bar	108 bar/turn	80 l/min	350 bar	V1-V2	1/2"G	1.52 kg
							F	M10x1	