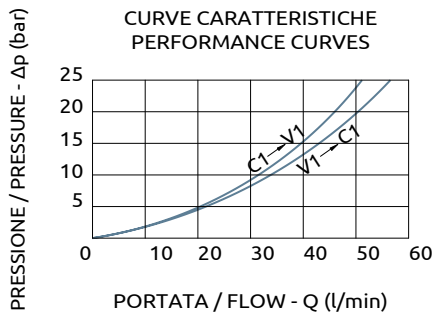
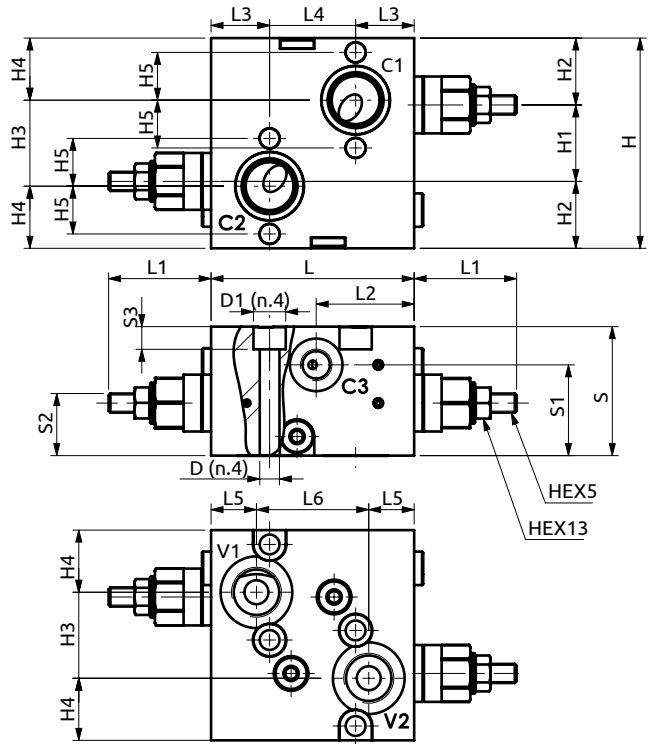
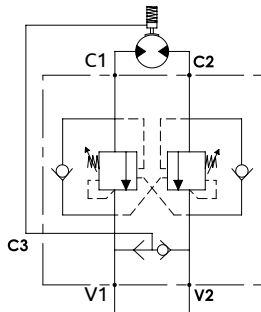




## Valvola di blocco bilanciata doppia per centro aperto

### Dual overcenter valve for open centre



Corpo in acciaio / Steel body

<b>A070481.41.00</b>	85	~42	41	24.5	36	19	47	54	38	22	9.5	88	32	28	36	26	20	Ø8.25	Ø13.5
<b>COD.</b>	L	L1	L2	L3	L4	L5	L6	S	S1	S2	S3	H	H1	H2	H3	H4	H5	D	D1



#### DESCRIZIONE

Valvola di blocco bilanciata doppia con flangiatura per motori idraulici DANFOSS OMR e OMP.

#### DESCRIPTION

Dual flangeable overcenter valve for DANFOSS OMR and OMP machines.

#### CODICE ORDINAZIONE PIOMBATURA

916003

#### SEALING ORDERING CODE

Codice Ordinazione	Rapporto di Pilotaggio	Campo di Taratura	Taratura Standard	Incremento per Giro	Portata Massima	Pressione Max	Dimensione Porte		Peso
Ordering Code	Pilot Ratio	Pressure Range	Standard Setting	Pressure Increase	Max Flow	Max Pressure	Port Size		Weight
A070481.41.00	4.2:1	60-220 Bar	160 Bar	135 Bar/turn	60 L/min	350 Bar	V1, V2	1/2"G	2.8 kg
							C3	1/4"G	