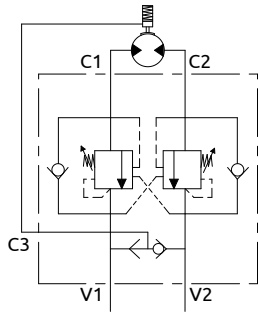


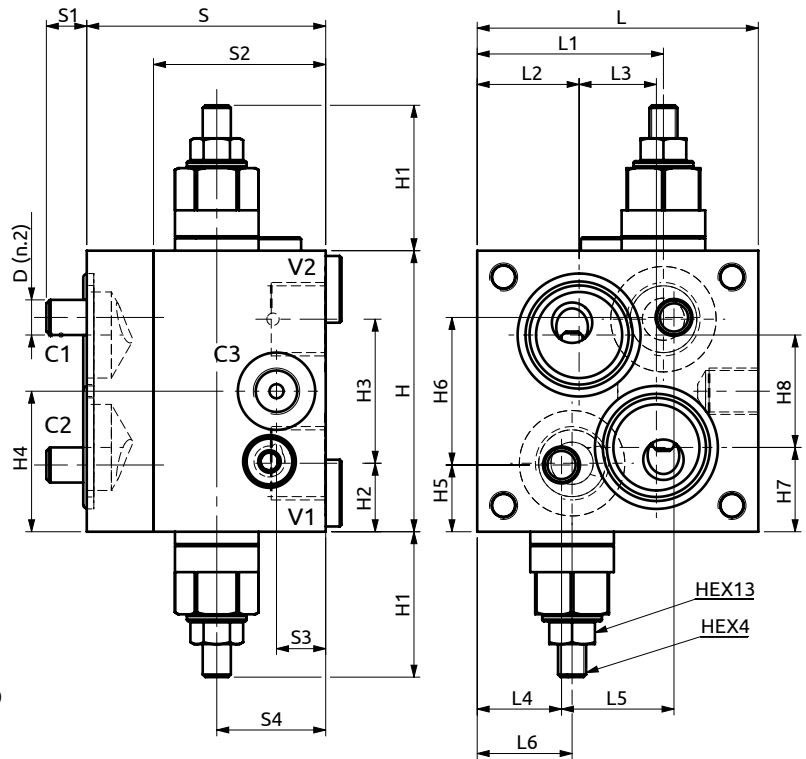
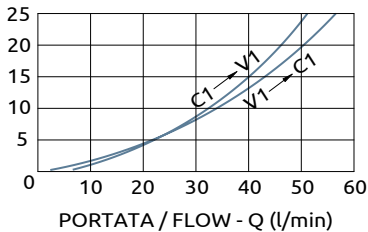


Valvola di blocco bilanciata doppia serie 165 flangiabile per motori idraulici
Dual overcenter valve "165 series" flangeable for hydraulic motors



PRESSIONE / PRESSURE - Δp (bar)

CURVE CARATTERISTICHE
PERFORMANCE CURVES



Corpo in alluminio / Aluminium body

80	53	29	22	24	32	27	68	11.5	49	14	31	80	~42	19.5	41	40	19	42	24	32	M10
L	L1	L2	L3	L4	L5	L6	S	S1	S2	S3	S4	H	H1	H2	H3	H4	H5	H6	H7	H8	D



DESCRIZIONE

Valvola di blocco bilanciata doppia con flangiatura per motori danfoss OMS.

DESCRIPTION

Dual flangeable overcenter valve for danfoss motors OMS.

CODICE ORDINAZIONE
PIOMBATURA

SEALING ORDERING
CODE

916003

Codice Ordinazione	Rapporto di Pilotaggio	Campo di Taratura	Taratura Standard	Incremento per giro	Portata Massima	Pressione Max	Dimensione Porte		Peso
Ordering Code	Pilot Ratio	Pressure Range	Standard Setting	Pressure Increase	Max Flow	Max Pressure	Port Size		Weight
B070481.38.00	4.2:1	60-220 bar	190 bar	135 bar/turn	60 l/min	350 bar	V1, V2, C1, C2	1/2"G	1.5 kg
							C3	1/4"G	