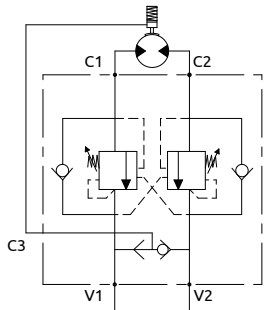
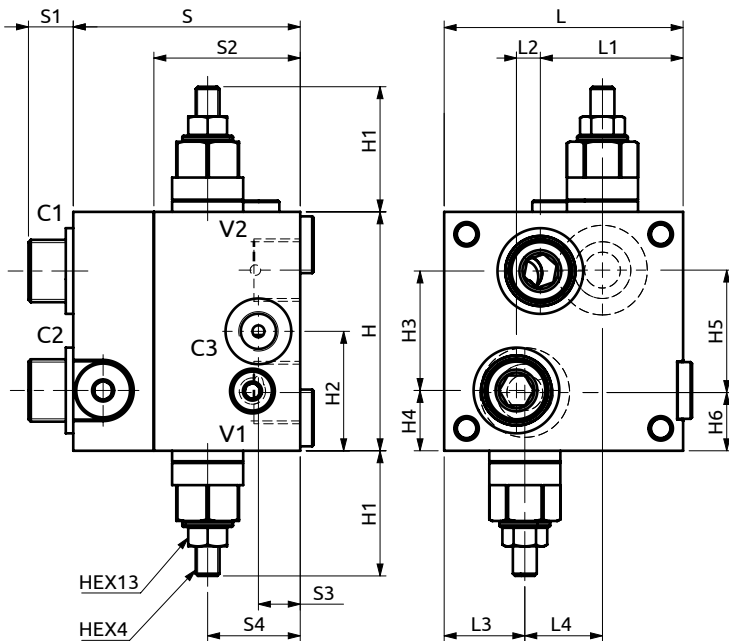
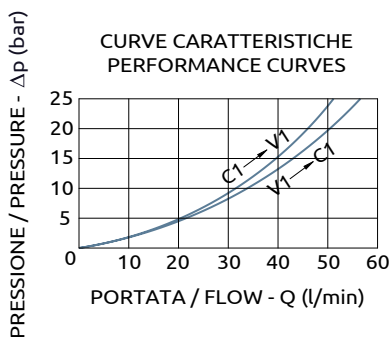




Valvola di blocco bilanciata doppia serie 165 flangiabile per motori idraulici  
 Dual overcenter valve "165 series" flangeable for hydraulic motors



CURVE CARATTERISTICHE  
 PERFORMANCE CURVES



Corpo in alluminio / Aluminium body

80	47.8	8	27	26	76	15	49	14	31	80	~42	40	40	20.2	41	19.5
L	L1	L2	L3	L4	S	S1	S2	S3	S4	H	H1	H2	H3	H4	H5	H6



DESCRIZIONE	DESCRIPTION
Valvola di blocco bilanciata doppia con flangiatura per motori SAMHYDRAULIK MB1010.	Dual flangeable overcenter valve for SAMHYDRAULIK MB1010 motors.
CODICE ORDINAZIONE PIOMBATURA	SEALING ORDERING CODE
916003	

Codice Ordinazione	Rapporto di Pilotaggio	Campo di Taratura	Taratura Standard	Incremento per giro	Portata Massima	Pressione Max	Dimensione Porte	Peso	
Ordering Code	Pilot Ratio	Pressure Range	Standard Setting	Pressure Increase	Max Flow	Max Pressure	Port Size	Weight	
B070481.35.00	4.2:1	60-220 bar	130 bar	135 bar/turn	60 l/min	350 bar	V1, V2, C1, C2 C3	1/2"G 1/4"G	1.6 kg