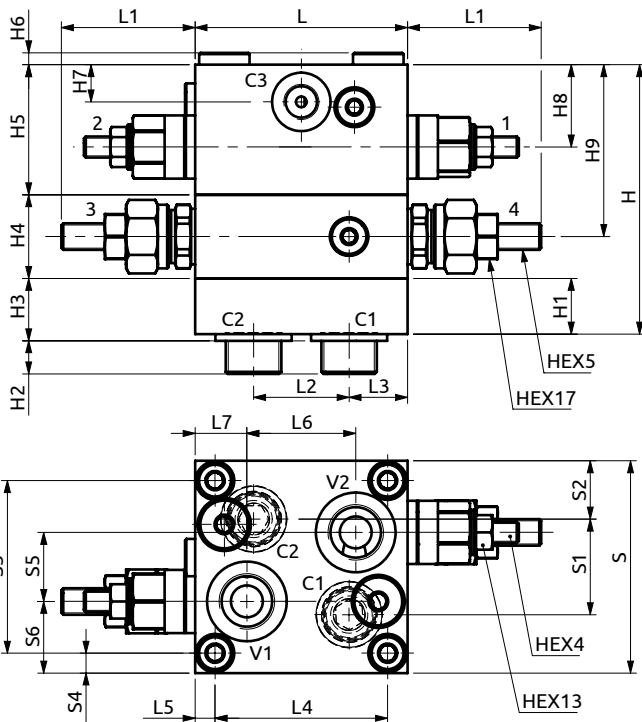
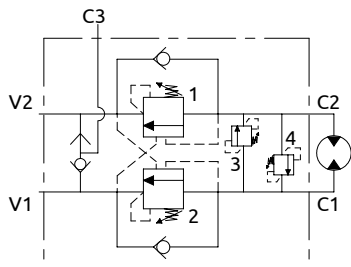


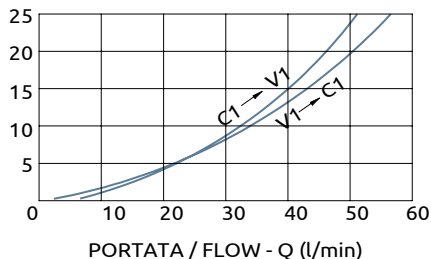


Valvola di blocco bilanciata doppia Flangiabile per motori idraulici serie
Flangeable dual overcenter valve for hydraulic motors "165 series"



PRESSIONE / PRESSURE - Δp (bar)

CURVE CARATTERISTICHE
 PERFORMANCE CURVES



Corpo in alluminio / Aluminium body

| | | | | | | | | | | | | | | | | | | | | | | | | |
|----|-----|----|----|----|-----|----|------|----|----|----|----|-----|----|----|-------|----|------|------|------|----|-----|----|----|-------|
| 80 | ~52 | 36 | 22 | 65 | 7.5 | 41 | 19.5 | 80 | 36 | 22 | 65 | 7,5 | 26 | 27 | 101.5 | 21 | 12.5 | 23.5 | 31.5 | 49 | 4.5 | 14 | 31 | 64.75 |
| L | L1 | L2 | L3 | L4 | L5 | L6 | L7 | S | S1 | S2 | S3 | S4 | S5 | S6 | H | H1 | H2 | H3 | H4 | H5 | H6 | H7 | H8 | H9 |



| DESCRIZIONE | DESCRIPTION |
|---|---|
| Valvola di blocco bilanciata doppia con valvola di massima doppia incrociata flangiata con bulloni per motori danfoss OMR, OMP. | Dual overcenter valve with dual flangeable relief valve cross-line for danfoss motors OMR, OMP. |
| CODICE ORDINAZIONE PIOMBATURA | SEALING ORDERING CODE |
| 916003 - 916005 | |

| Codice Ordinazione | Rapporto di Pilotaggio | Campo di Taratura | Taratura Standard | Incremento per Giro | Portata Massima | Pressione Max | Dimensione Porte | Peso |
|--------------------|------------------------|-------------------|-------------------|---------------------|-----------------|---------------|------------------|--------|
| Ordering Code | Pilot Ratio | Pressure Range | Standard Setting | Pressure Increase | Max Flow | Max Pressure | Port Size | Weight |
| B070481.33.00 | 4.2:1 | 1-2 | 60-220 bar | 200 bar | 60 l/min | 350 bar | V1, V2, C1, C2 | 1/2"G |
| | | 3-4 | 100-350 bar | 130 bar | | | 110 bar/turn | C3 |