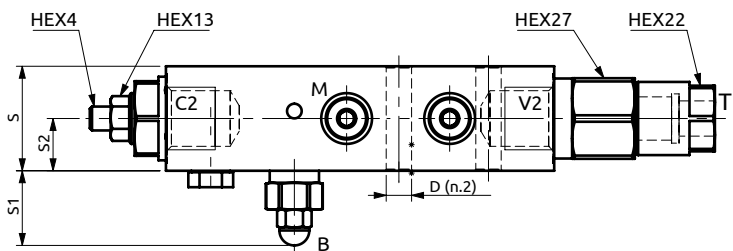
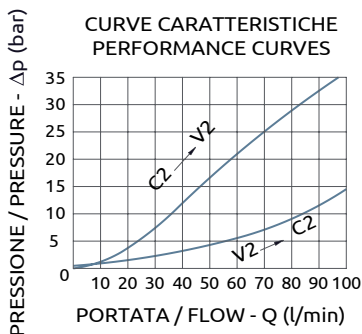
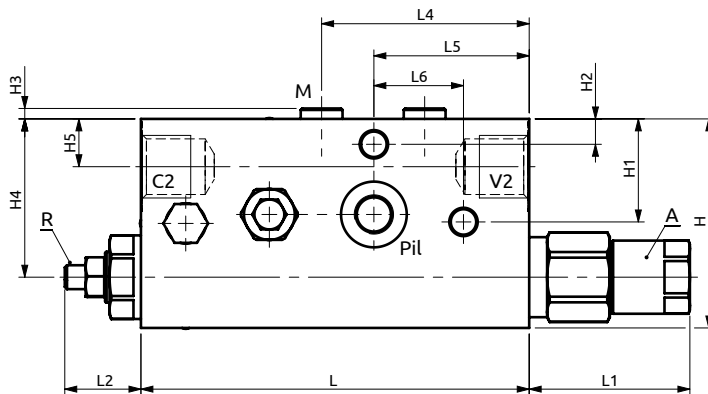
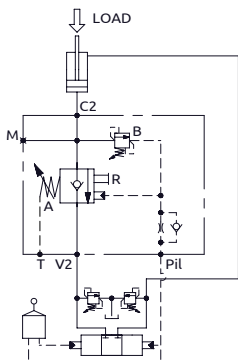


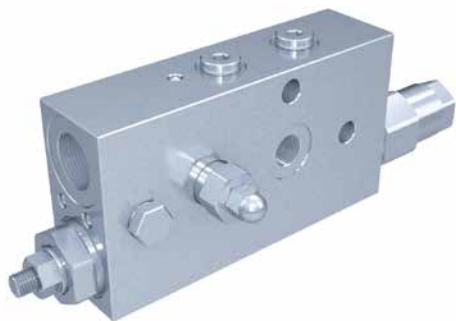


Valvola in linea per escavatori serie EMM 190 destra  
 Valve for earth moving machines "EMM 190 series" dx



Corpo in acciaio / Steel body

<b>A060450.01.00</b>	130	54	~24	35	69.5	52	30	35	25	17.5	70	34.5	8.5	3.5	53	16	Ø8.5
<b>COD.</b>	L	L1	L2	L3	L4	L5	L6	S	S1	S2	H	H1	H2	H3	H4	H5	D



CODICE ORDINAZIONE  
 PIOMBATURA

SEALING ORDERING  
 CODE

916003

DESCRIZIONE

DESCRIPTION

Collegare all'impianto come da schema. Il pilotaggio della valvola è prelevato dai manipolatori di comando distributore e la valvola permette: il flusso libero da V2 verso C2, il sostentamento del carico con distributore in neutro o pompa ferma, controllo della discesa a valvola pilotata e protezione contro sovrappressioni nel cilindro. L'attacco T deve essere collegato direttamente a scarico.

To be connected as shown. The pilot signal is taken from the machine manipulators, the valve allows: free flow from V2 to C2, to hold the load with spool in neutral position or with the pump not running, controlled movement when pilot pressure is applied, relief function against overpressure in the cylinder. T port must be connected directly to the tank.

Codice Ordinazione	Campo di Taratura	Taratura Standard	Incremento per giro	Portata Massima	Pressione Max	Dimensione Porte	Peso	
Ordering Code	Pressure Range	Standard Setting	Pressure Increase	Max Flow	Max Pressure	Port Size	Weight	
A060450.01.00	A	7-19.5 bar	7.5 bar	100 l/min	500 bar	V2, C2	1/2"G	2.5 kg
	B	200-400 bar	350 bar			Pil, T	1/4"G	
				M	1/8"G			