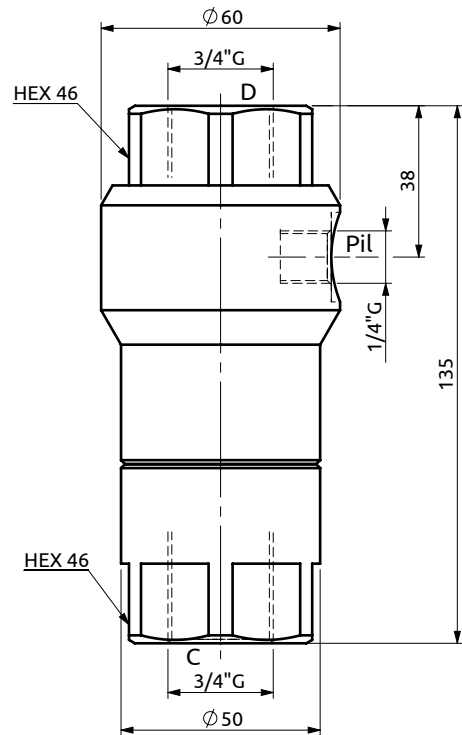
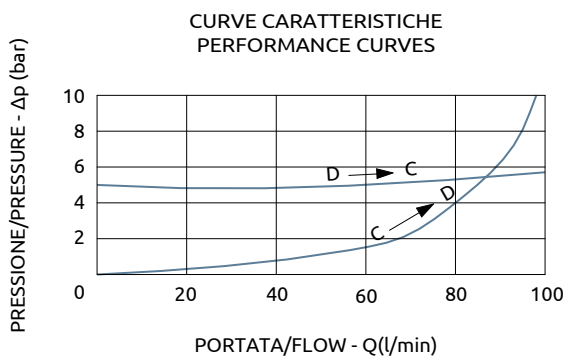
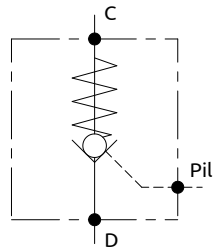




## Valvola di blocco pilotata a manicotto Pilot operated check valve sleeve type



DESCRIZIONE	DESCRIPTION
Permette il flusso libero da D verso C. Idonea al sostentamento di un carico, non al controllo discesa.	The valve allows free flow from D to C. Suitable to hold a load not to control a load lowering.

Codice Ordinazione	Rapporto di Pilotaggio	Pressione d'inizio Apertura	Portata Massima	Pressione Max	Peso
Ordering Code	Pilot Ratio	Cracking Pressure	Max Flow	Max Pressure	Weight
A050611.01.00	1:3.1	5 bar	100 l/min	300 bar	1.8 kg