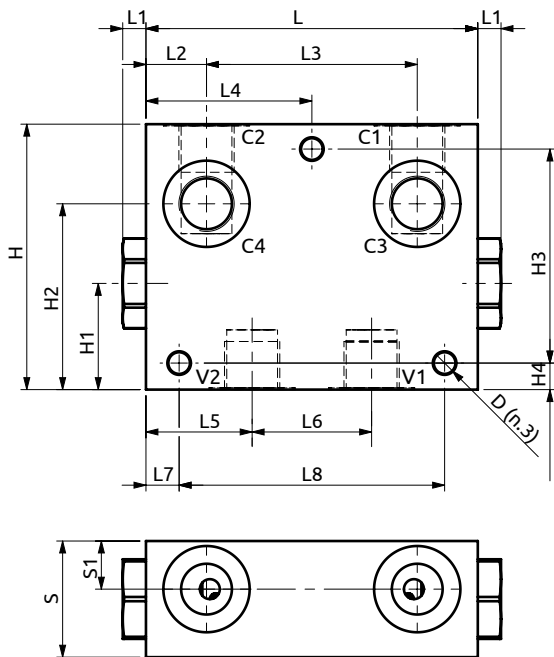
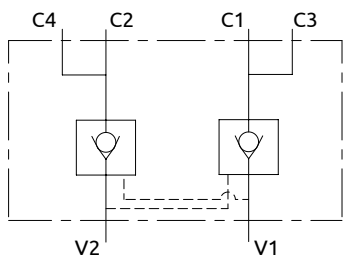
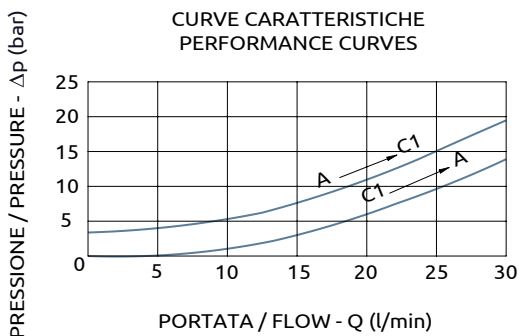




Valvola di blocco doppia pilotata
Dual pilot operated check valve



CURVE CARATTERISTICHE
PERFORMANCE CURVES



Corpo in alluminio / Aluminium body

B050351.04.00	100	7	18.25	63.5	50	32	36	10	80	35	14.5	80	32	56	64.5	8	Ø6.5
COD.	L	L1	L2	L3	L4	L5	L6	L7	L8	S	S1	H	H1	H2	H3	H4	D



DESCRIZIONE	DESCRIPTION
Valvola di blocco doppia flangiabile con otturatore avente apertura ON-OFF.	Flangeable dual check valve poppet type with ON-OFF opening.

Codice Ordinazione	Rapporto di Pilotaggio	Portata Massima	Pressione di inizio apertura	Pressione Max	Dimensione Porte	Peso
Ordering Code	Pilot Ratio	Max Flow	Cracking Pressure	Max Pressure	Port Size	Weight
B050351.04.00	7:1	30 l/min	4.5 bar	210 bar	3/8"G	1.4 kg