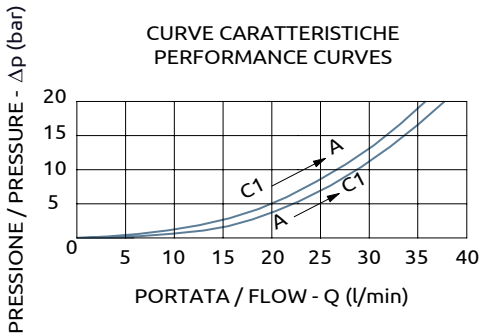
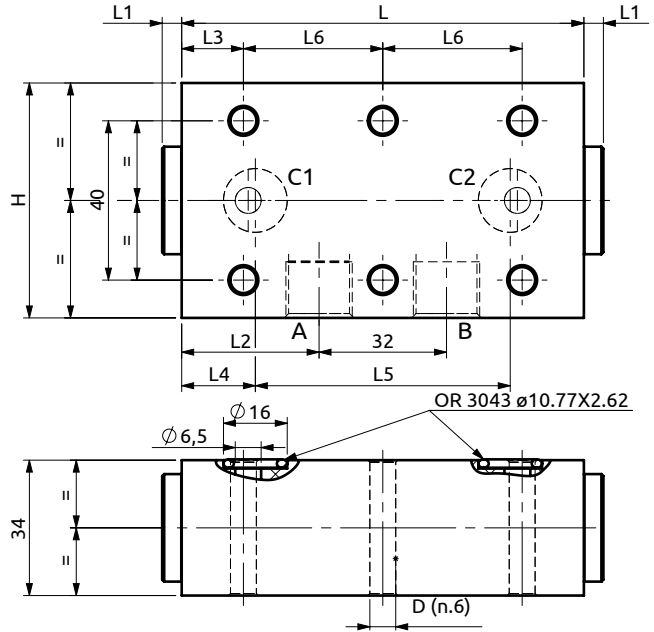
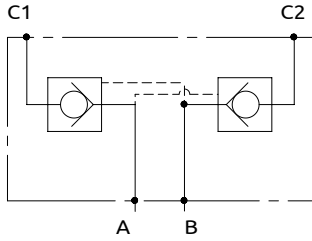




**Valvola di blocco doppia pilotata**  
*Dual pilot operated check valve*



Corpo in alluminio / Aluminium body

A050352.01.00	101	5	34.5	15.5	18.5	64	35	59	6.5
B050352.02.00	101	7	34.5	15.5	18.5	64	35	59	6.5
B050352.03.00	101	5	34.5	15.5	18.5	64	35	59	6.5
B050352.04.00	101	7	34.5	15.5	18.5	64	35	59	6.5
B050352.05.00	96	11	32	13	17	62	35	59	6.5
B050352.06.00	102	6	35	11	18.5	65	40	70	8.5
COD.	L	L1	L2	L3	L4	L5	L6	H	D



DESCRIZIONE	DESCRIPTION
Valvola di blocco doppia flangiabile con otturatore a ventura ON-OFF. Le versioni B050352.03.00 e B050352.04.00 non hanno la guarnizione sul pistone di pilotaggio.	Flangeable dual check valves poppet type with ON-OFF opening. Versions B050352.03.00 and B050352.04.00 have not the seal on the piloting piston.

Codice Ordine	Rapporto di Pilotaggio	Portata Massima	Pressione di inizio apertura	Pressione Max	Dimensione Porte	Peso
Ordering Code	Pilot Ratio	Max Flow	Cracking Pressure	Max Pressure	Port Size	Weight
A050352.01.00	7.1:1	40 l/min	1.5 bar	350 bar	3/8"G	0.6 kg
B050352.02.00	7.1:1	40 l/min	8 bar	350 bar	3/8"G	0.6 kg
B050352.03.00	7.1:1	40 l/min	1.5 bar	350 bar	3/8"G	0.6 kg
B050352.04.00	7.1:1	40 l/min	8 bar	350 bar	3/8"G	0.6 kg
B050352.05.00	7.1:1	40 l/min	8 bar	350 bar	3/8"G	0.6 kg
B050352.06.00	4.7:1	40 l/min	8 bar	350 bar	3/8"G	0.6 kg