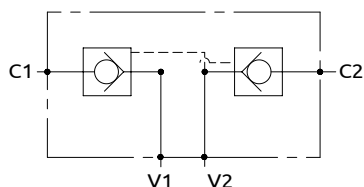


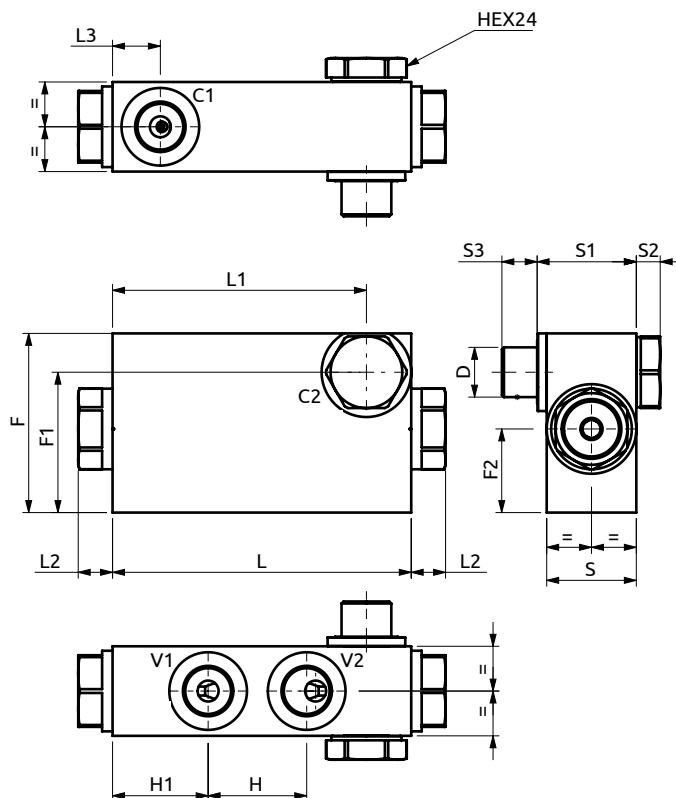
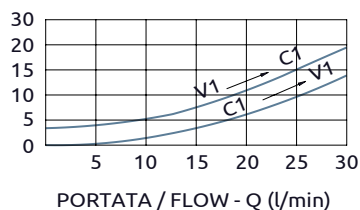


## Valvola di blocco doppia pilotata con bullone Dual pilot operated check valve with hollow screw



PRESSIONE / PRESSURE -  $\Delta p$  (bar)

CURVE CARATTERISTICHE  
PERFORMANCE CURVES



Corpo in alluminio / Aluminium body

<b>B050357.02.00</b>	100	85	11.5	16	30	33.2	8	12	33	32	60	47	28	3/8"G
<b>COD.</b>	<b>L</b>	<b>L1</b>	<b>L2</b>	<b>L3</b>	<b>S</b>	<b>S1</b>	<b>S2</b>	<b>S3</b>	<b>H</b>	<b>H1</b>	<b>F</b>	<b>F1</b>	<b>F2</b>	<b>D</b>



### DESCRIZIONE

Permette il flusso libero da V1 verso C1. Idonea al sostentamento di un carico, non al controllo discesa.

### DESCRIPTION

The valve allows free flow from V1 to C1. Suitable to hold a load not to control a load lowering.

Codice Ordinazione	Rapporto di Pilotaggio	Pressione di Inizio Apertura	Portata Massima	Pressione Max	Dimensione Porte	Peso
Ordering Code	Pilot Ratio	Cracking Pressure	Max Flow	Max Pressure	Port Size	Weight
B050357.02.00	4.7:1	4.5 bar	30 l/min	350 bar	3/8"G	0.7 kg