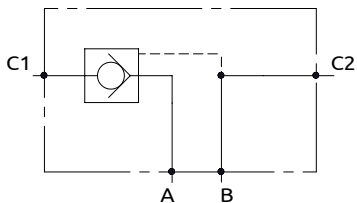
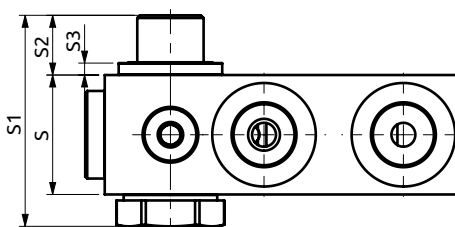
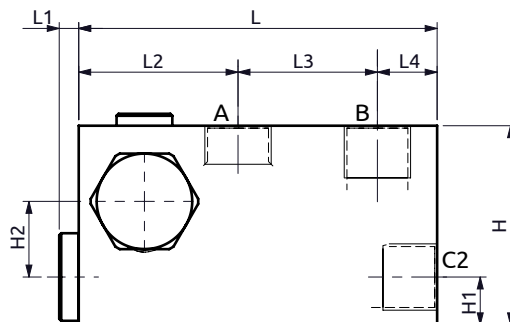
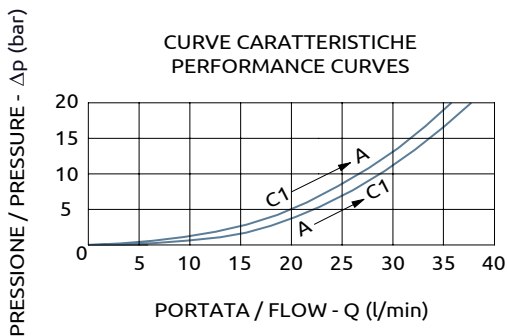




Valvola di blocco semplice pilotata flangiata con bullone
Single pilot operated flangeable check valve



CURVE CARATTERISTICHE
PERFORMANCE CURVES



Corpo in alluminio / Aluminium body

A050302.09.00	90	5	40	35	15	30	53	15	3	50	12	19
COD.	L	L1	L2	L3	L4	S	S1	S2	S3	H	H1	H2



DESCRIZIONE	DESCRIPTION
Permette il flusso libero da A verso C1. Idonea al sostentamento di un carico, non al controllo discesa.	The valve allows free flow from A to C1. Suitable to hold a load not to control a load lowering.

Codice Ordine	Rapporto di Pilotaggio	Portata Massima	Pressione Max	Dimensione Porte	Peso
Ordering Code	Pilot Ratio	Max Flow	Max Pressure	Port Size	Weight
A050302.09.00	4.7:1	40 l/min	400 bar	3/8"G	1 kg