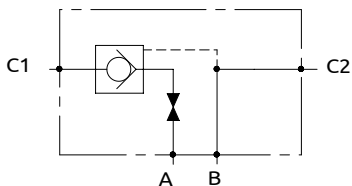
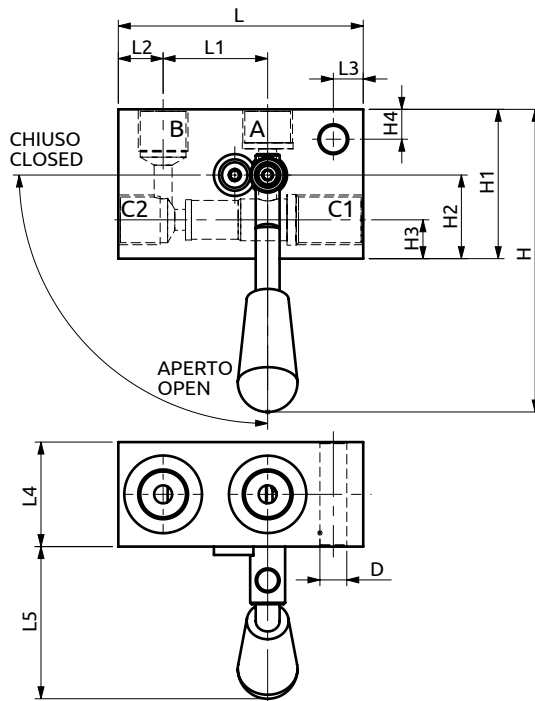
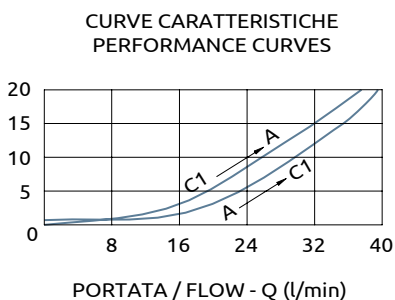




**Valvola di blocco semplice pilotata sinistra (con rubinetto)**  
*Single pilot operated check valve with manual shut-off left*



PRESSIONE / PRESSURE -  $\Delta p$  (bar)



Corpo in alluminio / Aluminium body

<b>B050304.06.00</b>	82	35	15	10	35	51	101	50	28	13	10	Ø9
<b>COD.</b>	L	L1	L2	L3	L4	L5	H	H1	H2	H3	H4	D



DESCRIZIONE	DESCRIPTION
Permette il flusso libero da A verso C1. Idonea al sostentamento di un carico, non al controllo discesa.	The valve allows free flow from A to C1. Suitable to hold a load not to control a load lowering.

Codice Ordinazione	Rapporto di Pilotaggio	Portata Massima	Pressione Max	Dimensione Porte	Peso
Ordering Code	Pilot Ratio	Max Flow	Max Pressure	Port Size	Weight
B050304.06.00	4.7:1	40 l/min	300 bar	3/8"G	0.4 kg