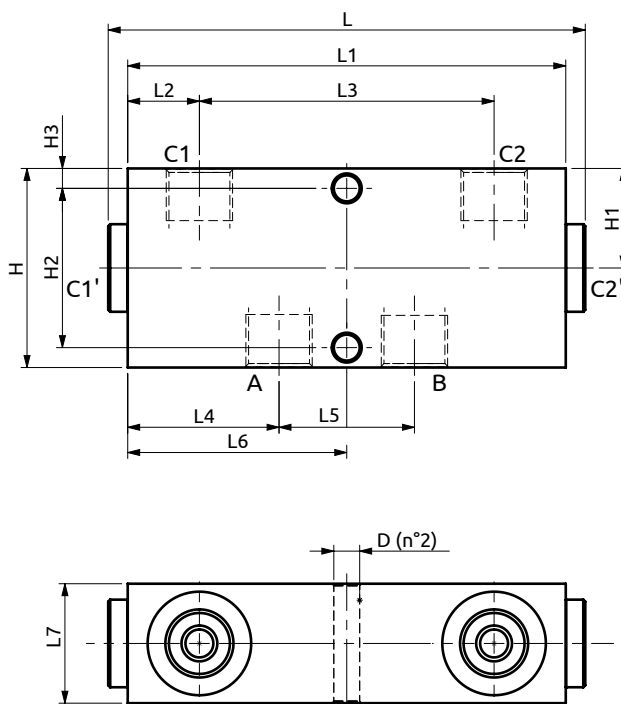
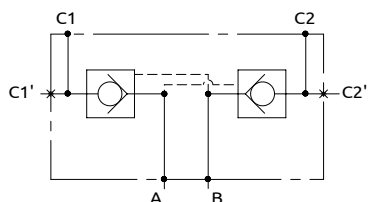


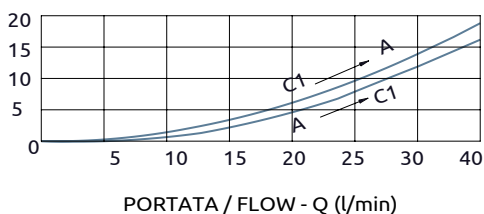


Valvola di blocco doppia Dual check valves



PRESSIONE / PRESSURE - Δp (bar)

CURVE CARATTERISTICHE
PERFORMANCE CURVES



Corpo in acciaio / Steel body

A050351.01.00	120	110	18	74	38	34	55	30	50	25	40	5	ø6.5
A050351.02.00	110	100	20	60	33	34	50	30	60	25	40	10	ø6.5
A050351.03.00	110	100	20	60	33	34	50	30	60	25	40	10	ø6.5
COD.	L	L1	L2	L3	L4	L5	L6	L7	H	H1	H2	H3	D



DESCRIZIONE

Valvola di blocco doppia
con otturatore avente apertura
ON-OFF con uscite C1 e C2
lateralì o in linea.

DESCRIPTION

Dual check valves poppet type
with ON-OFF opening,
outlet C1 and C2
on the side or in line.

NOTA

Cod. A050351.03.00 non
dispone delle porte C1' e C2'.

NOTE

Code A050351.03.00 doesn't
have ports C1' and C2'.

Codice Ordinazione	Rapporto di Pilotaggio	Portata Massima	Pressione Max	Dimensione Porte	Peso
Ordering Code	Pilot Ratio	Max Flow	Max Pressure	Port Size	Weight
A050351.01.00	4.7:1	40 l/min	400 bar	3/8"G	1.1 kg
A050351.02.00	4.7:1	40 l/min	400 bar	3/8"G	1.2 kg
A050351.03.00	4.7:1	40 l/min	400 bar	3/8"G	1.2 kg