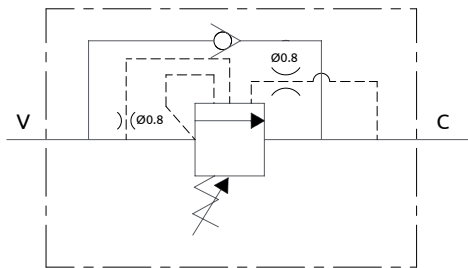
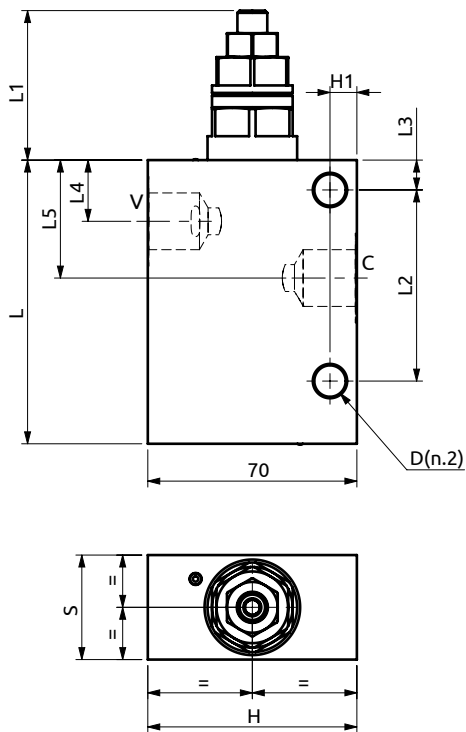
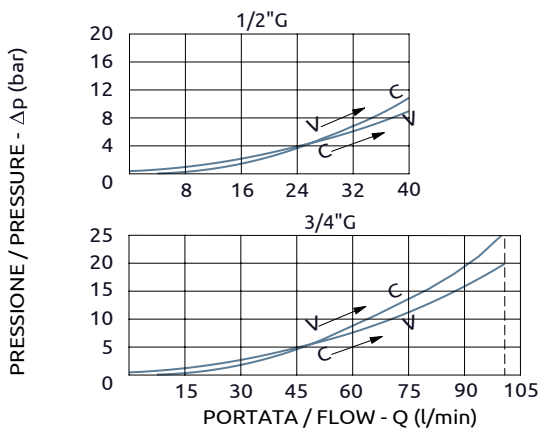




**Valvola di sequenza pilotata**  
*Pilot operated sequence valve*



**CURVE CARATTERISTICHE**  
**PERFORMANCE CURVES**



Corpo in alluminio / Aluminium body

<b>B040402.02.00</b>	95	51	64	10	20.5	39.5	35	70	9	Ø10.5
<b>B040602.02.00</b>	110	60	70	10	22	40.5	45	90	10	Ø10.5
<b>COD.</b>	L	L1	L2	L3	L4	L5	S	H	H1	D



DESCRIZIONE	DESCRIPTION
Valvola di sequenza con taratura regolabile.	Sequence valve with adjustable setting.

Codice Ordine	Campo di Taratura	Taratura Standard	Incremento per Giro	Portata Massima	Pressione Max	Dimensione Porte	Peso
Ordering Code	Pressure Range	Standard Setting	Pressure Increase	Max Flow	Max Pressure	Port Size	Weight
B040402.02.00	30-150 bar	120 bar	24 bar/turn	40 l/min	220 bar	1/2"G	0.8 kg
B040602.02.00	20-150 bar	120 bar	15 bar/turn	100 l/min	220 bar	3/4"G	1.5 kg