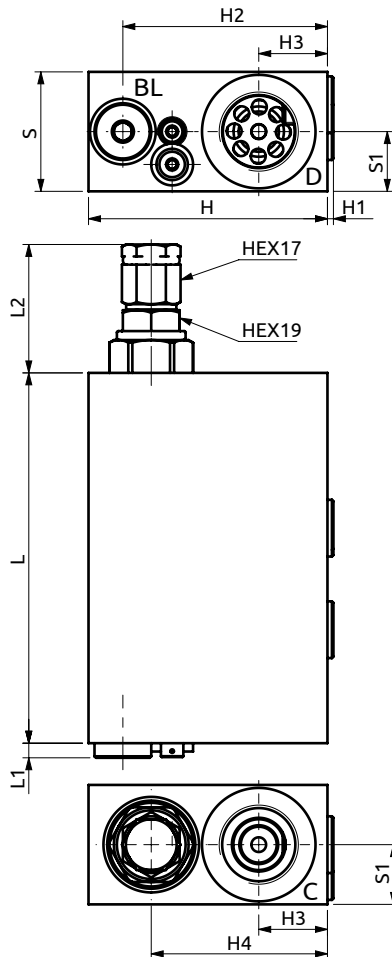
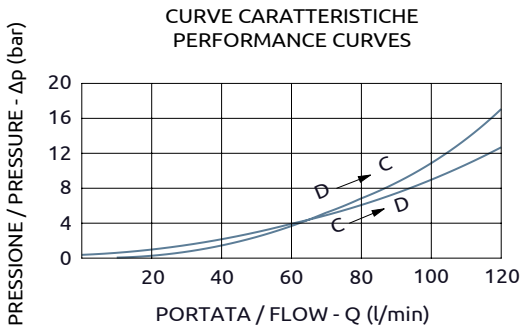
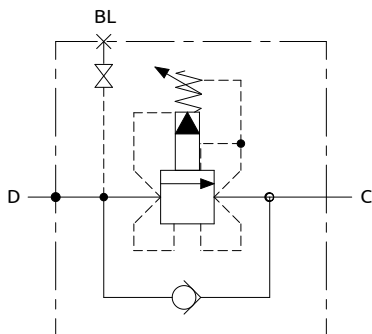




Valvola di sequenza compensata
Pressure compensated sequence valve



Corpo in acciaio / Steel body

A040602.03.00	124	5	43	40	20	80	2	68.5	23	59
COD.	L	L1	L2	S	S1	H	H1	H2	H3	H4



DESCRIZIONE	DESCRIPTION
Valvola di sequenza con taratura regolabile.	Sequence valve with adjustable setting.

Codice Ordinazione	Campo di Taratura	Taratura Standard	Incremento per Giro	Portata Massima	Pressione Max	Dimensione Porte		Peso
Ordering Code	Pressure Range	Standard Setting	Pressure Increase	Max Flow	Max Pressure	Port Size		Weight
A040602.03.00	50-240 bar	100 bar	45 bar/turn	120 l/min	350 bar	C, D	3/4"G	2.6 kg
						BL	1/4"G	