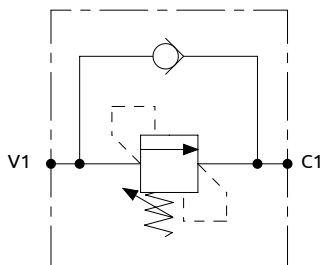
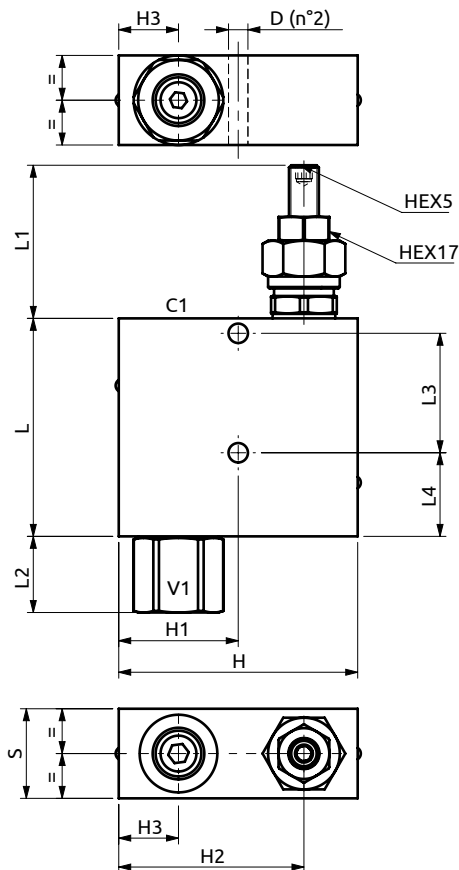
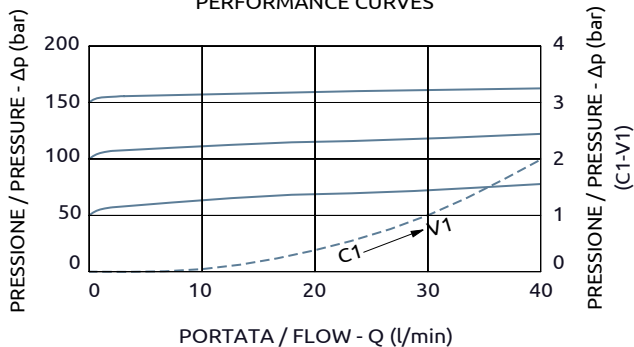




Valvola di sequenza in linea
Sequence valve



CURVE CARATTERISTICHE
PERFORMANCE CURVES



Corpo in alluminio / Aluminium body

| | | | | | | | | | | | |
|----------------------|----|-----|------|----|----|----|----|----|----|----|------|
| B040352.02.00 | 73 | ~50 | 25.5 | 40 | 28 | 30 | 80 | 40 | 62 | 20 | Ø6.5 |
| COD. | L | L1 | L2 | L3 | L4 | S | H | H1 | H2 | H3 | D |



| DESCRIZIONE | DESCRIPTION |
|--|---|
| Valvola di sequenza con taratura regolabile. | Sequence valve with adjustable setting. |

| Codice Ordinazione | Campo di Taratura | Taratura Standard | Incremento per Giro | Portata Massima | Pressione Max | Dimensione Porte | Peso |
|--------------------|-------------------|-------------------|---------------------|-----------------|---------------|------------------|--------|
| Ordering Code | Pressure Range | Standard Setting | Pressure Increase | Max Flow | Max Pressure | Port Size | Weight |
| B040352.02.00 | 50-150 bar | 140 bar | 25 bar/turn | 40 l/min | 350 bar | 3/8"G | 0.7 kg |