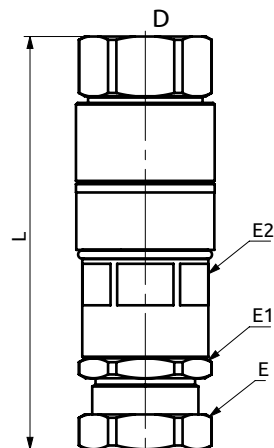
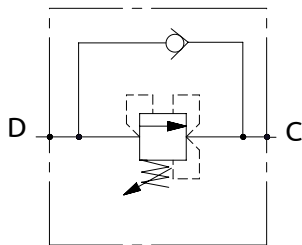


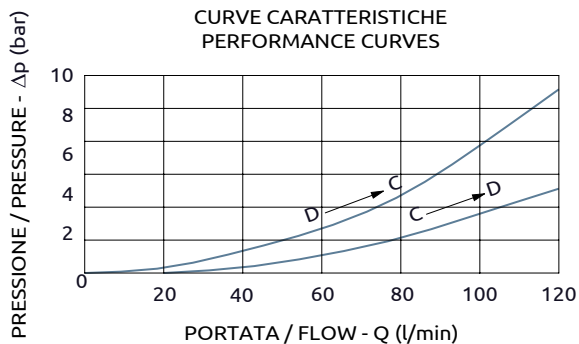
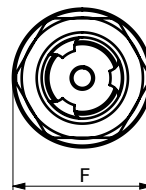


Valvola di sequenza compensata

Pressure compensated sequence valve



Non svitare oltre Lmax
Do not unscrew more than Lmax



Corpo in alluminio/Aluminium body

A040403.01.00	~112.5	~113	Ø41.8	HEX36	HEX36	HEX34
A040603.01.00	~124.5	~126	Ø41.8	HEX36	HEX36	HEX34
COD.	L	Lmax	F	E	E1	E2



DESCRIZIONE	DESCRIPTION
Valvola di sequenza con taratura regolabile.	Sequence valve with adjustable setting.

Codice Ordinazione	Campo di Taratura	Taratura Standard	Incremento per Giro	Portata Massima	Pressione Max	Dimensione Porte		Peso
Ordering Code	Pressure Range	Standard Setting	Pressure Increase	Max Flow	Max Pressure	Port Size		Weight
A040403.01.00	50-150 bar	65 bar	~50 bar/turn	60 l/min	400 bar	D, C	1/2"G	0.82 kg
A040603.01.00	50-150 bar	100 bar	~50 bar/turn	120 l/min	400 bar	D, C	3/4"G	0.82 kg