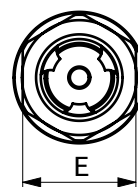
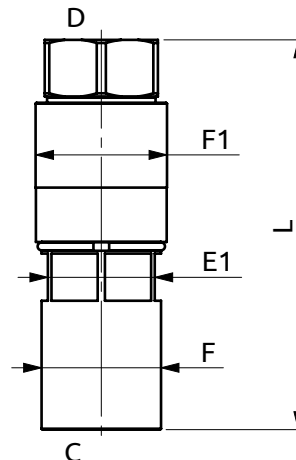
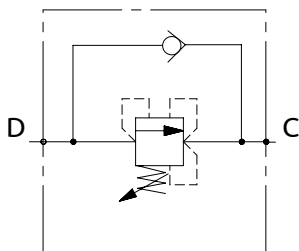




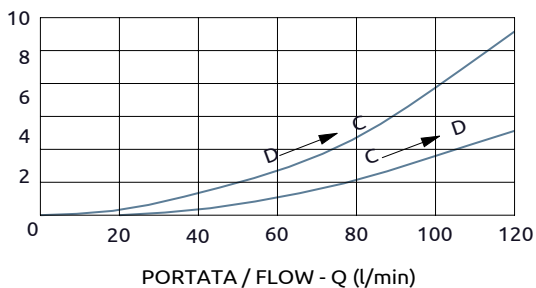
## Valvola di sequenza compensata

### Pressure compensated sequence valve



PRESSIONE / PRESSURE -  $\Delta p$  (bar)

CURVE CARATTERISTICHE  
PERFORMANCE CURVES



Corpo in acciaio/Steel body

A040601.14.00	124	Ø38	Ø42	HEX36	HEX34
A040601.15.00	124	Ø38	Ø42	HEX36	HEX34
A040601.18.00	124	Ø38	Ø42	HEX36	HEX34
COD.	L	F	F1	E	E1



DESCRIZIONE

DESCRIPTION

Valvola di sequenza con taratura regolabile.

Sequence valve with adjustable setting.

Codice Ordinazione	Campo di Taratura	Taratura Standard	Incremento per Giro	Portata Massima	Pressione Max	Dimensione Porte		Peso
Ordering Code	Pressure Range	Standard Setting	Pressure Increase	Max Flow	Max Pressure	Port Size		Weight
A040601.14.00	50-120 bar	90 bar	~30 bar/turn	120 l/min	500 bar	D, C	3/4"G	0.8 kg
A040601.15.00	150-280 bar	150 bar	~46 bar/turn	120 l/min	500 bar	D, C	3/4"G	0.8 kg
A040601.18.00	100-160 bar	150 bar	~30 bar/turn	120 l/min	500 bar	D, C	3/4"G	0.8 kg