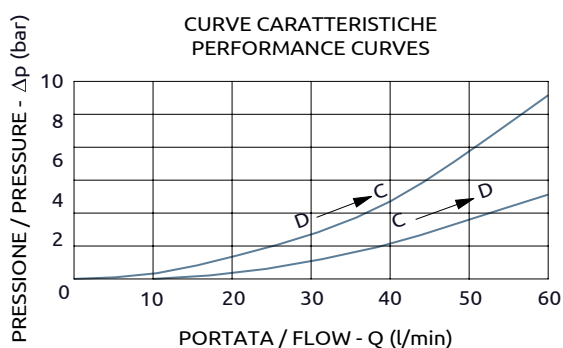
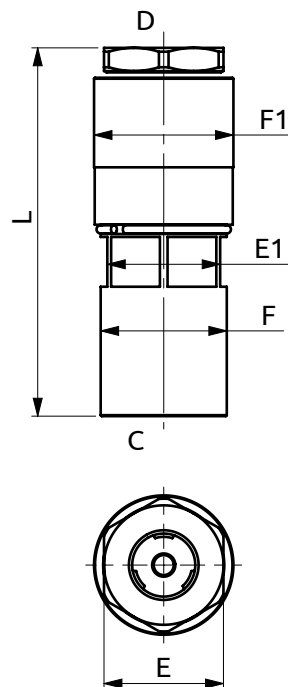
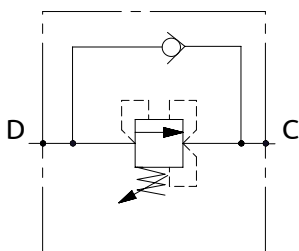




Valvola di sequenza compensata

Pressure compensated sequence valve



Corpo in acciaio / Steel body

A040401.17.00	111	Ø38	Ø42	HEX36	HEX34
COD.	L	F	F1	E	E1



DESCRIZIONE	DESCRIPTION
Valvola di sequenza con taratura regolabile.	Sequence valve with adjustable setting.

Codice Ordinazione	Campo di Taratura	Taratura Standard	Incremento per Giro	Portata Massima	Pressione Max	Dimensione Porte		Peso
Ordering Code	Pressure Range	Standard Setting	Pressure Increase	Max Flow	Max Pressure	Port Size		Weight
A040401.17.00	50-150 bar	90 bar	~30 bar/turn	60 l/min	500 bar	D, C	1/2"G	0.8 kg